

The Cost Study

at the University of Delaware



2023 Annual Public Report

A Report on the 2022 Study Cycle

www.ire.udel.edu/cost | ire-cost@udel.edu

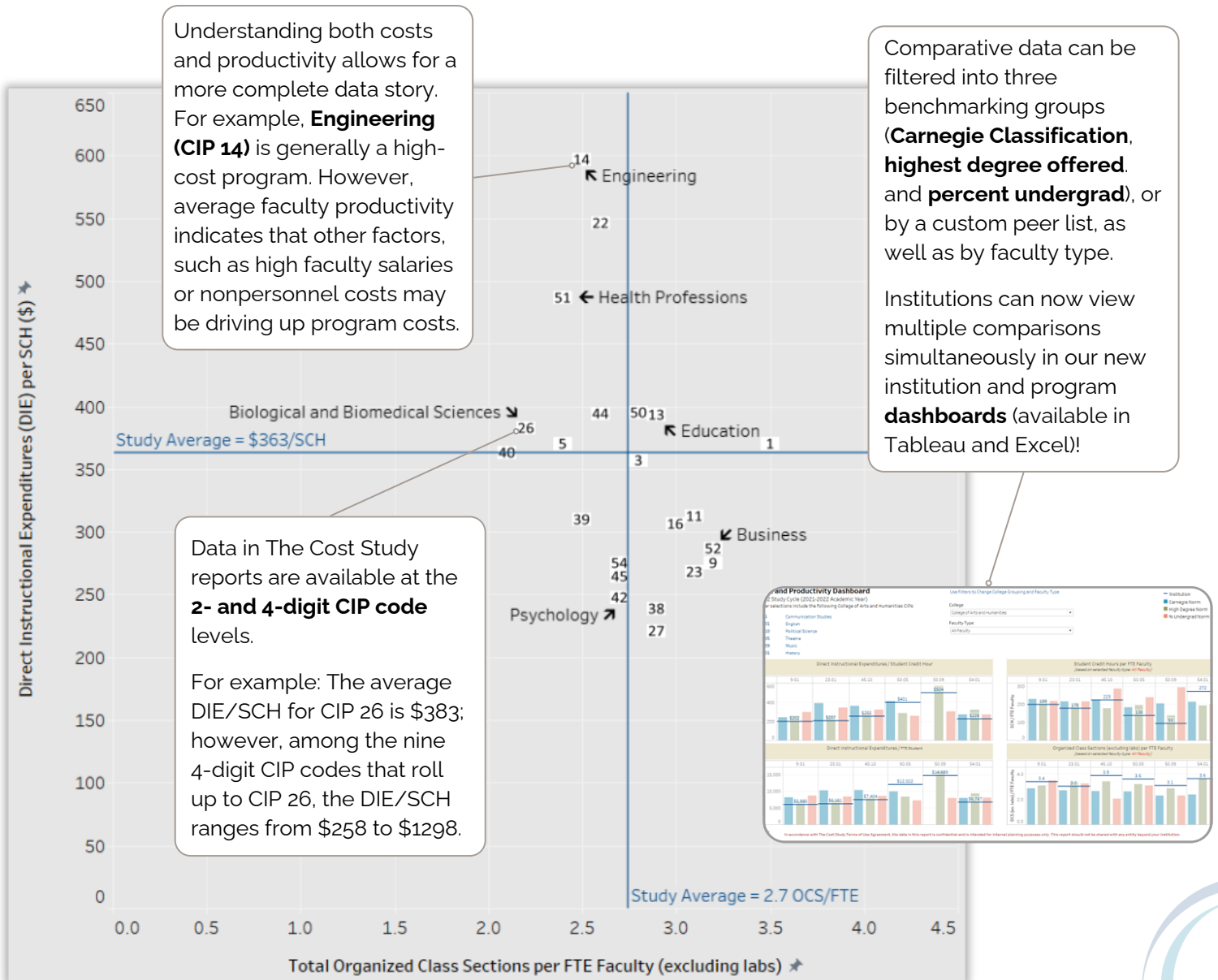
OVERVIEW

The Cost Study is a program-level, comparative analysis of faculty teaching loads, direct instructional costs, and separately budgeted research and public service activity. Since 1992, the Study has allowed four-year, nonprofit colleges and universities to annually report and benchmark their institution's costs and productivity. The Cost Study answers the question:

Who... Is teaching what to whom... And at what cost?

DATA STORYTELLING

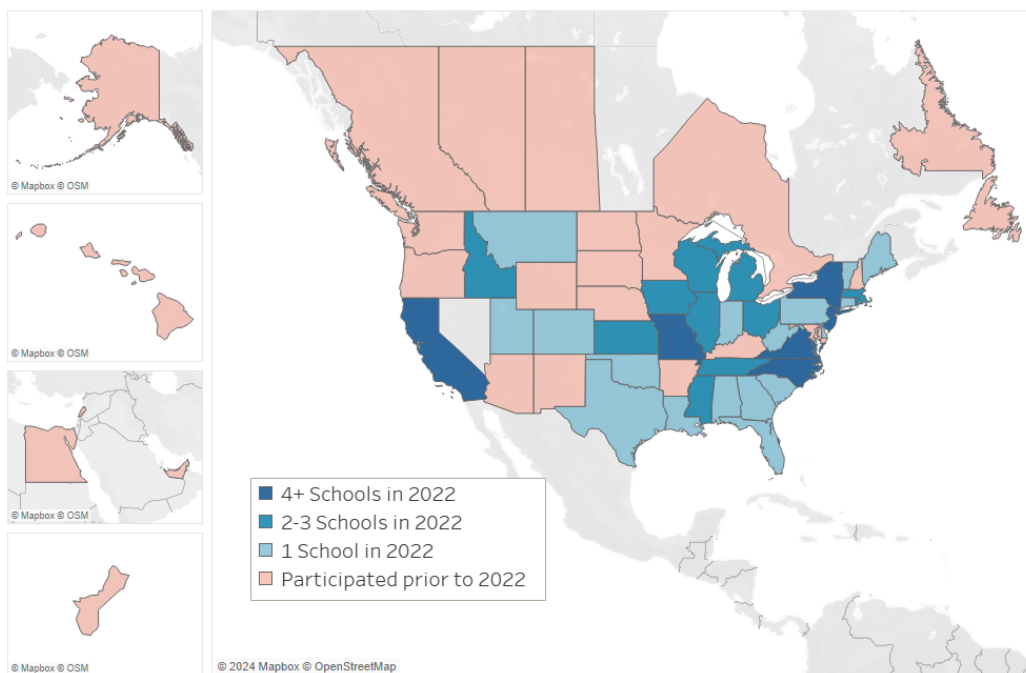
SAMPLE 2-DIGIT CIP CODE BENCHMARKS OF INSTRUCTIONAL COSTS AND PRODUCTIVITY FROM THE 2022 CYCLE + OVERVIEW OF AVAILABLE DATA



PARTICIPANT FEEDBACK

Numerous changes to the data preparation process for the 2022 cycle allowed for improved data collection and validation, including: requiring that missing data be noted with an 'm' rather than a blank cell, allowing for participants to select 'quarter' or 'semester' for each program individually, and formatting the 'CIP for program' field as "text" to allow for the trailing zeroes now present in the 2020 CIP codes. Additionally, if the participant changes the CIP code of an existing program, The Cost Study can now retain historical records in the portal under the previously assigned CIP code.

DIVERSE PARTICIPATION



- PUBLIC & PRIVATE 4-YEARS
- CONSORTIA GROUPS: SUG, AAUDE, NACU
- STATE SYSTEMS: NC, NJ, AND MO
- EVERY CARNEGIE CLASSIFICATION IN THE DOCTORAL, MASTERS, AND BACCALAUREATE CATEGORIES
- 3564 PROGRAMS FROM 89 INSTITUTIONS

MOST COMMONLY REPORTED PROGRAMS BY CIP NUMBER OF UNIQUE CIPS = 574

23.0101	English Language and Literature, General	45.1001	Political Science/Government, General
26.0101	Biology/Biological Sciences, General	45.1101	Sociology
27.0101	Mathematics, General	50.0901	Music
40.0501	Chemistry, General	52.0201	Business Administration and Management, General
40.0801	Physics, General	54.0101	History, General
42.0101	Psychology, General		

A COLLABORATIVE PARTNERSHIP



PARTICIPANT MEETINGS

HEC met with 26 different institutions throughout the year to introduce the Study, review data elements, and discuss reporting options.



SPECIAL DATA REQUESTS

HEC completed 23 peer requests, including a multiyear request; worked with three state system offices on special data requests; and provided dashboards to 12 institutions.



COMMON QUESTIONS

Based on participant feedback, HEC began developing a data table that combines the T/TT Faculty and Other Regular Faculty data into a new faculty category for analysis.

COST STUDY IN USE

"We get tremendous value from our participation in The Cost Study. We appreciate the ability to benchmark against peers. Equally important, we find that the formidable data standards stimulate our ongoing internal collaborations around data quality. That bolsters confidence in our own and peer data and our reliance on these data in decision-making."

–Deanna Caveny, Associate Provost for Faculty Affairs,
College of Charleston



EVOLVING IN 2023

Before the launch of a new cycle, The Cost Study team evaluates the prior cycle to identify any needed modifications to the data fields or definitions. For the 2023 cycle, we implemented two primary updates:

College/School variable: To improve our new dashboard reporting tools, we created a new (optional) variable for the 2023 cycle that collects the name of the college, school, or unit for each program submitted to the study.

Optional Covid-19 ONLINE SCH: In response to the massive shift to online instruction as a result of the Covid-19 pandemic, the study included four additional optional online fields in the 2021 and 2022 cycles that captured "originally scheduled" online activity. These fields have been removed from the data entry form for the 2023 cycle.

HIGHER EDUCATION CONSORTIA

ADVISORY BOARD



Ann Lehman (Chairperson)

Associate Vice President for Grants and Research and Chief of Staff
Saint Bonaventure University



Shari Ellertson, Ph.D.

Senior Executive Director, Institutional Effectiveness
Boise State University



Carol Ann MacGregor, Ph.D.

Vice President Academic and Dean
St. Jerome's University



Richard J. Reeves (ex officio)

Associate Vice President for Institutional Research and Effectiveness
University of Delaware



Richard Riccardi, Sc.D.

Deputy Commissioner for Academic Affairs and Student Success
Massachusetts Dept. of Higher Education



Ronald Thompson, Ph.D.

Senior Institutional Research Analyst
University of Missouri System

HEC & THE COST STUDY IN HIGHER ED

- Steven Hemelt and Johnathan Conzelmann (University of North Carolina at Chapel Hill), Brad Hershbein (W.E. Upjohn Institute for Employment), Andrew Simon (University of Chicago), Shawn Martin (Cornerstone Research), and Kevin Stange (University of Michigan) utilized Cost Study data in their research on higher ed's response to the changing skill demand in the U.S. labor market. Findings were published in an August 2023 [working paper from the National Bureau of Economic Research](#) and a [report from IZA \(Institute of Labor Economics\)](#). Their research was supported by grants from the National Science Foundation, Russell Sage, and the Institute of Education Sciences.
- HEC executed a new data-sharing agreement with a team of economists interested in connecting Cost Study data with existing higher ed datasets as well as original data collected on higher ed management practices. Findings from Kenneth Troske (University of Kentucky), Jeffrey Smith (University of Wisconsin-Madison), and Alex Bryson (University College London) are forthcoming.
- HEC representatives attended various conferences as presenters and sponsors, to promote the use of The Cost Study in institutional and state-level decision making.

